




The first records of the dot snail *Paralaoma servilis* (Shuttleworth, 1852) and the black-headed slug *Krynickyllus melanocephalus* Kaleniczenko, 1851 in Czechia

DAGMAR ŘÍHOVÁ¹, ALENA KOCURKOVÁ², ŠTĚPÁNKA PODROUŽKOVÁ³ & LUCIE JUŘIČKOVÁ²

¹Department of Biology and Environmental Studies, Faculty of Education, Charles University, Magdalény Rettigové 4, CZ-116 39 Praha, Czechia,  <https://orcid.org/0000-0002-2122-130X>

²Department of Zoology, Faculty of Science, Charles University, Viničná 7, CZ-128 00 Praha 2, Czechia,

 <https://orcid.org/0000-0001-5163-1222>

 <https://orcid.org/0009-0007-1552-3815>

³Department of Zoology, National Museum of the Czech Republic, Cirkusová 1740, CZ-193 00 Praha 9 – Horní Počernice, Czechia, e-mail: stepanka.podrouzkova@nm.cz,  <https://orcid.org/0000-0002-0356-531X>

ŘÍHOVÁ D., KOCURKOVÁ A., PODROUŽKOVÁ Š. & JUŘIČKOVÁ L., 2026: The first records of the dot snail *Paralaoma servilis* (Shuttleworth, 1852) and the black-headed slug *Krynickyllus melanocephalus* Kaleniczenko, 1851 in Czechia. – *Malacologica Bohemoslovaca*, 25: 24–32.
<https://doi.org/10.5817/MaB2026-25-24>

Publication date: 15. 4. 2026.

This work is licensed under the Creative Commons Attribution 4.0 Public License.

The number of non-native species of terrestrial snails in Czechia has been increasing in recent years, probably due to climate change and the transport of goods as a result of intensive trade. The two newest species – *Paralaoma servilis* (Shuttleworth, 1852) and *Krynickyllus melanocephalus* Kaleniczenko, 1851 – were recorded in autumn 2024 in Prague-Dejvice (Dolní Šárka).

The native range of *P. servilis*, a micro-snail from the Punctidae family, spans the southwestern Pacific Rim, and the species has an adventitious distribution in North America, Europe, and the Macaronesian islands in the eastern Atlantic. Four empty shells were found in flood debris; the exact location in Prague is therefore unknown, and follow-up survey is needed.

Krynickyllus melanocephalus is native to Anatolia, the Caucasus, north-east Turkey, and north-west Iran, but since the 1990s it has been spreading westward into Europe. Its occurrence in Czechia has been anticipated in recent years, and the first two sites were found in October 2024 in Prague and Hradec Králové. Because strikingly coloured adults occur in the autumn months, other locations (Pardubice, Vyškov, Sázava, and Paskov) were discovered thanks to citizen science in the autumn of 2025. We assume that *K. melanocephalus* occurs in more locations in Czechia, which, however, have yet to be mapped.

Key words: non-native gastropods, human-assisted expansion of range, spreading by means of the global trade, first occurrence

Introduction

The number of records of new non-native species in Czechia has increased significantly in recent decades (PELTANOVÁ et al. 2012). Most of these species are new immigrants from southern regions, a phenomenon linked to climate change (ROQUES et al. 2009). However, we have also recorded several species spreading through the global trade in gardening substrates, flowers, and other goods (BERGEY et al. 2014). Two recent cases of such introduction, probably from these sources, are *Paralaoma servilis* and *Krynickyllus melanocephalus*.

Case One: *Paralaoma servilis* (Shuttleworth, 1852)

This micro-snail, belonging to the Punctidae family, was thought to originate in Australia and New Zealand. The first recorded observation outside its native range was be-

lieved to be on Madeira in 1831 (LOWE 1831), and since then it has been found on all continents except Antarctica (NEKOLA et al. 2025). However, recent analyses revealed that it is a group of several distinct species. One of these (*P. servilis* s.s.) is native to the southwestern Pacific Rim, others (e.g. *P. amblygona* and *P. borealis*) are native to Japan and North America, while *P. caputspinulae* and *P. morti* are native to New Zealand and Australia, respectively (NEKOLA et al. 2025).

The native range of *Paralaoma servilis* s.s. spans the southwestern Pacific Rim, and the species has an adventitious distribution that extends to North America, Europe, and the Macaronesian islands in the eastern Atlantic. Only one clade, which may have arisen along the Californian coast, is invasive (NEKOLA et al. 2025).

In Czechia, *P. servilis* was found in a flood debris sample from the Litovicko-Šárecký Stream in Prague-Dejvice (Dolní Šárka) (50.1175°N, 14.3769°E; four specimens; see

Fig. 1), which was collected on 21 October 2024, following the September 2024 flood. The results of this current faunistic survey within a long-term monitoring project has been summarised in PODROUŽKOVÁ et al. (2026).

The flood debris sample (approximately 8 liters in volume) was processed using a standard sieving method (LOŽEK 1956) with sieves having mesh sizes of 1 cm, 8 mm, 4 mm, and 2 mm respectively. Since the identification took place a year later, the shells recovered were already empty. All four specimen found have been deposited in the National Museum of the Czech Republic and are identified by the inventory number NMP P6M044160.

As the flood debris was collected from an unknown area, it is impossible to determine the precise location within Dolní Šárka where the species resides. However, according to field experiments (PODRUŽKOVÁ et al. 2025), the shells are transported over short distances of tens of metres, so the habitat is likely to be nearby. *Paralaoma servilis* has an affinity for humid environments near stream beds, rivers, and lakes (e.g. DE MATTIA 2006, WELTER-SCHULTES 2012 or GITTENBERGER et al. 2020) and may therefore live near the location where the shells were found. Further surveys using leaf litter samples and careful picking of individual shells are needed.

Paralaoma servilis has a small, flattened shell with the diameter of adult specimens ranging approximately 1.8–1.9 mm (WELTER-SCHULTES 2012, NEKOLA et al. 2025), with typical more or less regularly spaced riblets and fine spiral striae between riblets (see Fig. 2 and Fig. 3; and Fig. 2B in FARA et al. (2024) or description in GITTENBERGER et al. (2020) and NEKOLA et al. (2025)). A characteristic combination of the two different surface structures (radial riblets and fine spiral striation) together with reduced protoconch lirae, flattened shell shape and conspicuous colouration (translucent golden brownish to darker brown; WELTER-SCHULTES 2012) allows the species to be identified solely based on conchological characteristics.

The shells found in the flood debris in Dolní Šárka are smaller, with an average size of 1.4 mm. The largest shell found measures 1.7 mm in diameter (see Fig. 2 and Fig. 3). Since the empty shells found are not adult, the identification conchological characteristics listed in NEKOLA et al. (2025, Table 2) could only be used to a limited extent. The determination based on overall shell shape, loose coiling and reduced protoconch lirae was confirmed by Michal Horský (MUNI Brno), coauthor of the *Paralaoma* revision (NEKOLA et al. 2025).

Case two: *Krynockillus melanocephalus* Kaleniczenko, 1851

This terrestrial slug belongs to the Agriolimacidae family and is native to Anatolia, the Caucasus, north-east Turkey, and north-west Iran (VON PROSCHWITZ 2020). The species is characterised by its distinctive colouration. While the body is greyish white, the head and nape are always deep black (Fig. 4).

The black-headed slug began to spread more significantly around the 1990s. The first recorded instance of its presence outside of its native habitat occurred in Bad Tenn-



Fig. 1. Four specimens of *Paralaoma servilis* found in the flood debris from Prague-Dejvice, now deposited in the National Museum of the Czech Republic (No. NMP P6M044160). Photo by Dagmar Říhová.

stedt, Thuringia, Germany, in 1994, with further sightings reported in subsequent years (VON PROSCHWITZ 2020). It has also spread to parts of Russia (SCHIKOV, 2012), Latvia (WIKTOR & JURKOWSKA 2007 and ŠTEFFEK et al. 2008), Ukraine (KOROL & KORNIUSCHIN 2002; SVERLOVA & SON 2006 and GURAL-SVERLOVA et al. 2009), Belarus (BUGA & SINCHUK 2016; ZEMOGLYADCHUK 2016 and OSTROVSKY 2017), and Lithuania (STALAŽS et al. 2017). More recently, in autumn 2019, its presence was confirmed in Sweden (VON PROSCHWITZ 2020, who mentions unpublished occurrences in Northern Europe), and Hungary (TURÓCI et al. 2020). A few years later, it was reported in Slovakia (ČEJKA et al. 2022) and Poland (MAĆKIEWICZ & BORYS 2023). It was also reported from Romania and Moldova (HECKMANN & REISE in press). Given that almost all our neighbours have reported this species, it was highly anticipated that it would appear in Czechia very soon.

The first recorded sighting took place on 7 October 2024 in the Šárka–Lysolaje nature park in Prague-Dejvice (50.1162°N, 14.3748°E), close the border of the Dolní Šárka Nature Reserve. The adults were found under the bark of a tree stump surrounded by damp litter. During a malacological survey of the area, seven specimens were observed. Within a few days (21 and 27 October 2024), it was discovered at two other sites very close to the original location: the Žežulka hornbeam forest (50.1177N, 14.3798E), where 32 specimens were found on a dead log or in its close proximity to it under leaf litter, highly concentrated in two spots); and Malý mlýnek (50.1172N, 14.3768E), where five specimens were found close to the building itself, either in the garden wall or hidden in the decaying leaves of ornamental plants.

Since the black-headed slug has a typical life cycle, with the conspicuously coloured adults appearing in autumn,



Fig. 2. The only adult specimen of *Paralaoma servilis* found in Prague-Dejvice. It is 1.7 mm in diameter. Photo by Radovan Coufal.

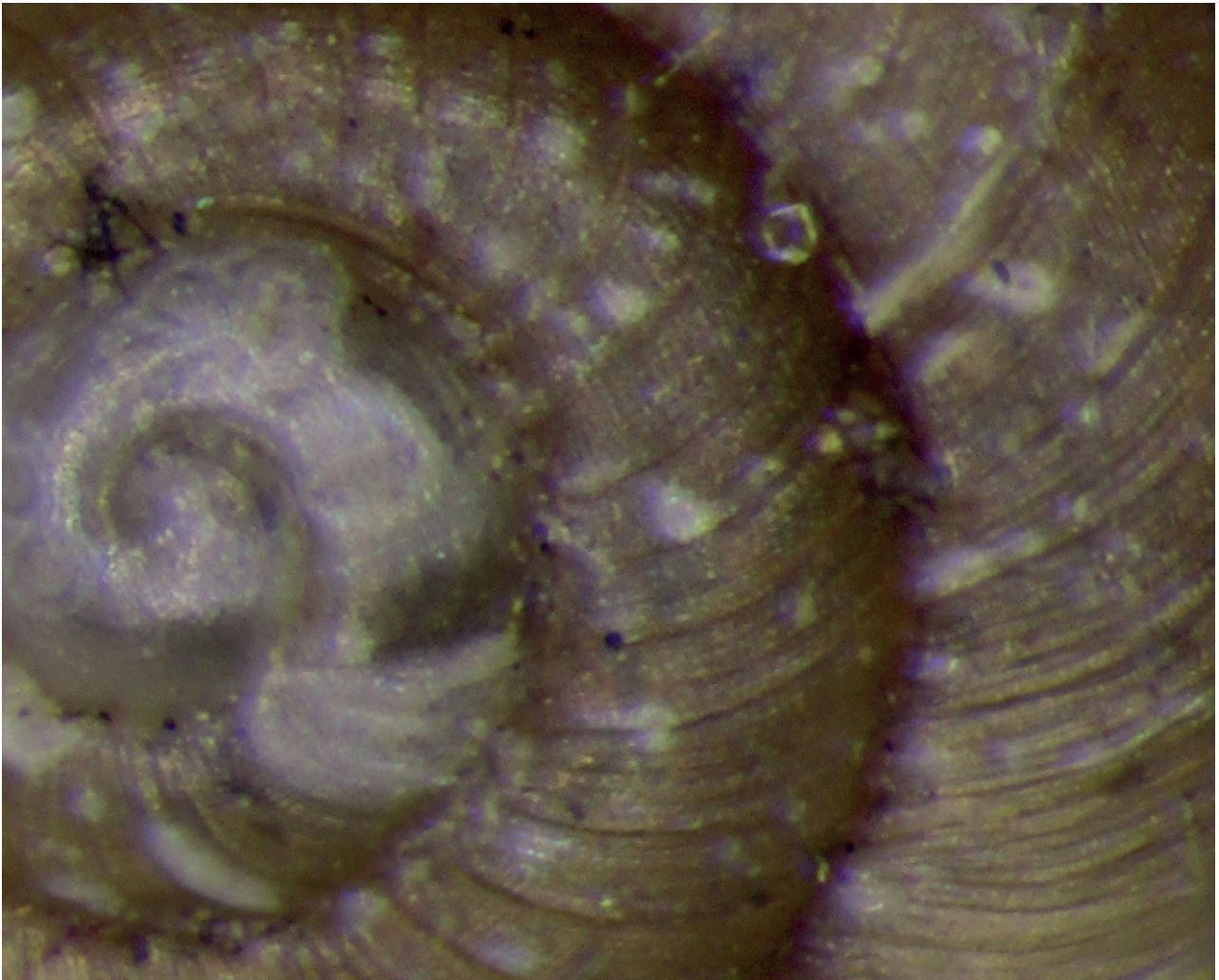


Fig. 3. Fine spiral striae between riblets on the largest shell of *Paralaoma servilis* found in Prague-Dejvice. Photo by Radovan Coufal.

the authors of this study used the iNaturalist citizen science database to search for other localities in Czechia. One record was added from the Facebook discussion group “Identification of Invertebrates” (in the original “Určování bezobratlých”). The first locality outside Prague was discovered just five days after the initial discovery on 12 October 2024, in Hradec Králové (50.1863N, 15.8412E). One individual was found crawling along a path through a suburban meadow bordered by small patches of mixed forest and buildings (KAUPOVÁ 2024). The other seven observations come from October 2025, approximately one year after the initial findings. Three of these (VAŠINA 2025a; 2025b; 2025c) were made in the town of Vyškov (NE from Brno) in the second half of October 2025; two were made in eastern Bohemia in Hradec Králové (KAUPOVÁ 2025) and in Pardubice (VÍTKOVÁ 2025); and one was made in central Bohemia in the town of Sázava (Q 2025). The 7th record is from the town of Paskov, near Frýdek-Místek in Silesia, and it was posted on Facebook (CHOVANCOVÁ 2025). The map in Fig. 6 and Table 1 summarise the currently known locations in Czechia.

The majority of observations show one adult individual

crawling along a concrete wall or paved road. However, KAUPOVÁ’s (2025) observations show more than two hundred specimens (213, according to the author’s note; see Fig. 5), which were collected within one hour from an area measuring three square metres. These specimens were observed crawling on leaf litter, small shrubs, or feeding on a discarded loaf of bread. Large aggregations of tens to hundreds of individuals are occasionally observed (e.g. TURÓCI et al. 2020 or ČEJKA et al. 2021), especially in areas with deeper layers of leaf litter and around dead wood. *Krynickyllus melanocephalus* inhabits moist areas under rocks, in decaying trees, and in the ground vegetation in deciduous forests (e.g. WATZ & VON PROSCHWITZ 2023; MAĆKIEWICZ & BORYS 2023). In Czechia, it is found near populated areas, such as gardens, parks, town forests, and cemeteries. It is considered a serious garden pest in northern Russia and Belarus (BUGA & SINCHUK 2016, SCHIKOV 2021), but it has been observed in Germany for 20 years without causing significant damage (VON PROSCHWITZ 2020); as well as in Hungary (TURÓCI et al. 2020). This species requires sufficient attention, and the situation in Czechia must be monitored.



Fig. 4. *Krynickillus melanocephalus*, found in oak-hornbeam forest Žežulka Prague-Dejvice on October 7th 2024. Photo by Ondřej Korábek.

Acknowledgments

The authors thank to the City of Prague for its financial support of the project, Grants to Support Projects to Improve the Environment (project no. 219/2024). This project also received support from the COOPERATIO (COOP) project and the Ministry of Culture of the Czech Republic (DKRVO 2024–2028/6.II.c, National Museum, 00023272). Our thanks go to Anna Kaupová, who recorded the first Czech sighting of *K. melanocephalus* on iNaturalist, for detailed information about her finds; to Radovan Coufal and Ondřej Korábek for photographing the specimens; and to Michal Horskák for confirming the identification of *P. servilis*. Ágnes Turóci and Jeff Nekola made a significant contribution to improving the quality of this paper.

References

- BERGEY E. A., FIGUEROA L. L., MATHER C. M., MARTIN R. J., RAY E. J., KURIEN J. T., WESTROP D. R. & SURIYAWON P., 2014: Trading in snails: plant nurseries as transport hubs for non-native species. – *Biological Invasions*, 16: 1441–1451. <https://doi.org/10.1007/s10530-013-0581-1>
- BUGA S. & SINCHUK A., 2016: Alien species of terrestrial invertebrates in black book of invasive animal species in Belarus. – In: Sustainable use, protection of animal world and forest management in the context of climate change, Conference proceedings, Chişinău, Moldova, 12.–13.10.2016: 101. <https://doi.org/10.53937/9789975302272.45>
- CHOVANCOVÁ T., 2025: Photo of *Krynickillus melanocephalus*. – Facebook, Určování bezobratlých [Identification of Invertebrates], online at <https://www.facebook.com/groups/bezobratli/permalink/2363881537347737/>, published October 24, 2025. (in Czech)
- ČEJKA T., BERAN L., COUFAL R., DVOŘÁK L., HLAVÁČ J. Č., HORÁČKOVÁ J., HORSÁKOVÁ V., JUŘIČKOVÁ L., KOSOVÁ T., ČAČANÝ J., SZABÓOVÁ D., ŘÍHOVÁ D., TEJ B. & HORSÁK M., 2021: Malacological news from the Czech and Slovak Republics in 2020. – *Malacologica Bohemoslovaca*, 20: 56–74. <https://doi.org/10.5817/MaB2021-20-56>
- ČEJKA T., BERAN L., COUFAL R., DVOŘÁK L., HORÁČKOVÁ J., HORSÁKOVÁ V., JUŘIČKOVÁ L., ADAMCOVÁ T., SZABÓOVÁ D., ŠKODOVÁ J. & HORSÁK M., 2022: Malacological news from the Czech and Slovak Republics in 2021. – *Malacologica Bohemoslovaca*, 21: 49–62. <https://doi.org/10.5817/MaB2022-21-49>
- DE MATTIA W., 2006: New records of *Testacella scutulum* Sowerby, 1821 and *Paralaoma servilis* (Shuttleworth, 1852) (Gastropoda: Pulmonata: Testacellidae et Punctidae) from Istria, Kvarner and Dalmatia (Italy, Slovenia and Croatia). – *Malakologische Abhandlungen*, 24: 121–127.
- FARA E., ROSTAN J., WÜRTH F., TACHET-PÉPIN E., RYELANDT J., STOFFER A., BICHAIN J.-M. & DOMMERGUES, J.-L., 2024: Sur la présence du gastéropode *Paralaoma servilis* (Shuttleworth, 1852) dans le nord-est de la France (régions Bourgogne-Franche-Comté et Grand Est). [On the presence of the gastropod *Paralaoma servilis* (Shuttleworth, 1852) in northeastern France (Bourgogne-Franche-Comté and Grand Est regions)]. – *Bulletin de la société d'histoire naturelle et d'ethnographie de Colmar*, 80(12): 81–89. (in French)
- GITTENBERGER E., BUDHA P. B. & BANK R. A. 2020: Amazing *Paralaoma servilis* (Gastropoda, Pulmonata, Punctidae) in Nepal. – *Bacteria* 84(1–3): 76–82.
- GURAL-SVERLOVA N. A., BALASHOV I. A. & GURAL R. I., 2009:



Fig. 5. More than two hundred specimens of *Krynickillus melanocephalus* found by KAUPOVÁ (2025) in Hradec Králové on October 25th 2025. Photo by Anna Kaupová.

Современное распространение наземных моллюсков семейства Agriolimacidae на территории Украины [Recent distribution of terrestrial mollusks of the family Agriolimacidae on the territory of Ukraine]. – Ruthenica, 19(2): 53–61. (in Russian)

HECKMANN A. & REISE H., in press: The Invasive Terrestrial Slug *Krynickillus melanocephalus* Kaleniczenko, 1851 now also in Romania (Gastropoda: Agriolimacidae). – North-Western Journal of Zoology.

KAUPOVÁ A., 2024: *Krynickillus melanocephalus*. – iNaturalist online at <https://www.inaturalist.org/observations/246935445>, published October 12, 2024

KAUPOVÁ A., 2025: *Krynickillus melanocephalus*. – iNaturalist online at <https://www.inaturalist.org/observations/322966049>, published October 25, 2025

KOROL E. N. & KORNIUSHIN A. V. 2002: Обнаружение интродуцированного вида слизней *Krynickillus melanocephalus* (Mollusca, Gastropoda, Stylommatophora) в Киеве и предварительные результаты его гельминтологического исследования [Introduced Population of *Krynickillus melanocephalus* (Mollusca, Gastropoda, Stylommatophora) Recorded in Kiiv and Preliminary Results of its Helminthological Investigation]. – Vestnik Zoologii, 36(6): 57–59. (in Ukrainian)

LOWE R. T., 1831: Primitiae faunae et floriae Maderae et Portus Sancti; sive species quaedam novae vel hactenus minus rite cognitae animalium et plantarum in his insulis degentium breviter descriptae [A preliminary account of the fauna and flora of Madeira and the Azores; or certain new or hitherto less proper-

ly known species of animals and plants inhabiting these islands, briefly described.]. – Transactions of the Cambridge Philosophical Society, 4: 1–70 [pls 1–6]. <https://www.biodiversitylibrary.org/page/13265840> (in Latin)

LOŽEK V., 1956: Klíč československých měkkýšů [Key of Czechoslovak Molluscs]. – Slovenská akadémia vied, Bratislava, 437 pp. (in Czech)

MAĆKIEWICZ J. & BORYS O., 2023: First record of invasive slug *Krynickillus melanocephalus* Kaleniczenko, 1851 (Gastropoda: Eupulmonata: Agriolimacidae) in Poland. – Folia Malacologica, 31(4): 229–235. <https://doi.org/10.12657/folmal.031.024>

NEKOLA J. C., BROOK F. J., FOON J. K., HORSÁKOVÁ V., ISHII Y., KÖHLER F., LÍZNAROVÁ E., NOVÁKOVÁ M., SAITO T., SALVADOR R. B. & HORSÁK M., 2025: Will the real invasive snail please stand up? A phylogenetic reconsideration of *Paralaoma servilis* (Shuttleworth, 1852) (Gastropoda: Stylommatophora: Punctidae). – Zoological Journal of the Linnean Society, 203(1): zlae 142. <https://doi.org/10.1093/zoolinnean/zlae142>

OSTROVSKY A. M., 2017: Новые находки синантропных видов слизней *Limacus flavus* (Linnaeus 1758) и *Krynickillus melanocephalus* Kaleniczenko, 1851 (Mollusca, Gastropoda, Stylommatophora) в Беларуси [New records of the synanthropic snail species *Limacus flavus* (Linnaeus 1758) and *Krynickillus melanocephalus* Kaleniczenko, 1851 (Mollusca, Gastropoda, Stylommatophora) in Belarus]. – Ruthenica, 27(4): 155–158. [https://doi.org/10.35885/10.35885/ruthenica.2017.27\(4\).2](https://doi.org/10.35885/10.35885/ruthenica.2017.27(4).2) (in Russian)

PELTANOVÁ A., DVOŘÁK L. & JUŘIČKOVÁ L., 2012: The spread of

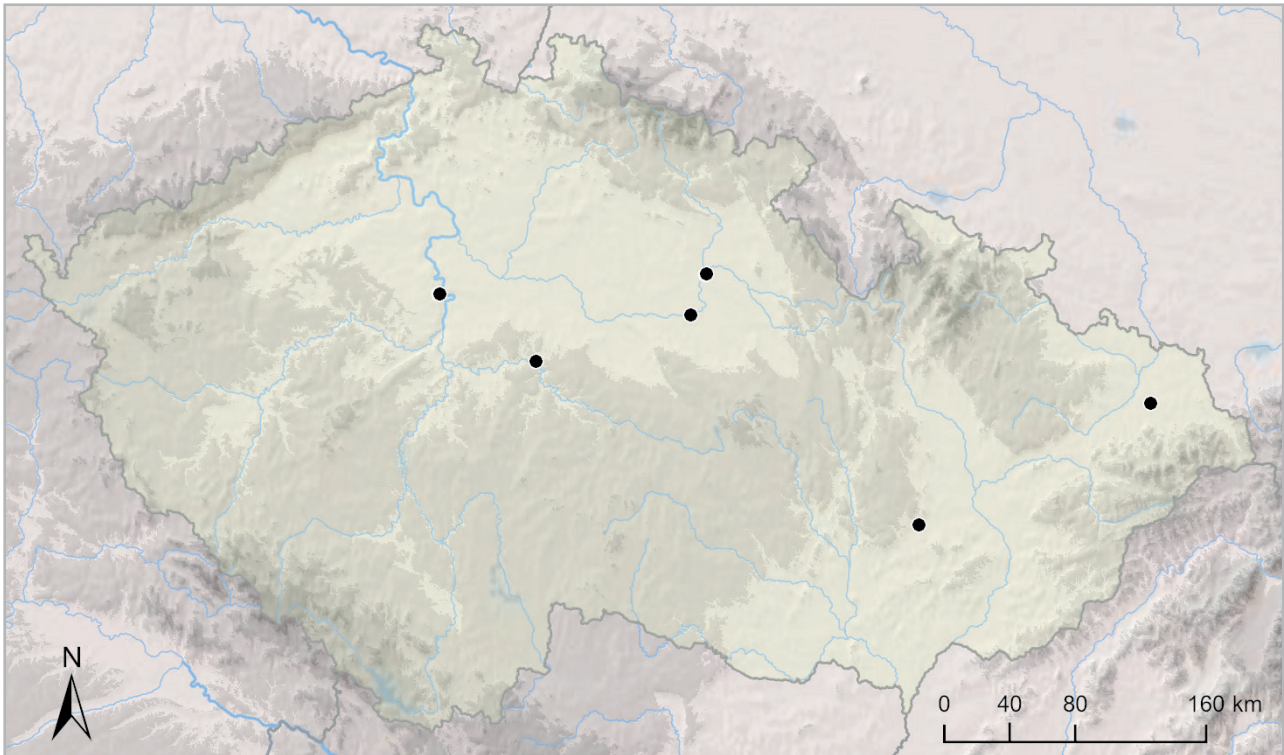


Fig. 6. The map of currently known localities of *Krynickillus melanocephalus* in Czechia. Sites includes (from West to East): Prague, Sázava, Pardubice, Hradec Králové, Vyškov, Paskov. Background map by Ondřej Hájek, map by Veronika Horskáková.

- non-native *Cepaea nemoralis* and *Monacha cartusiana* (Gastropoda: Pulmonata) in the Czech Republic with comments on other land snail immigrants. – *Biologia*, 67(2): 384–389. <https://doi.org/10.2478/s11756-012-0020-2>
- PODROUŽKOVÁ Š., JUŘIČKOVÁ L. & ČABLA A., 2025: Dispersal of land snails: How far can a snail drift? – *Biologia*, 80(6): 1383–1388. <https://doi.org/10.1007/s11756-025-01904-9>
- PODROUŽKOVÁ Š., KOCURKOVÁ A., ŘÍHOVÁ D., DRVOTOVÁ M., ORAVEC J., ŠKODOVÁ J. & JUŘIČKOVÁ L., 2026: Měkkýši Přírodního parku Šárka – Lysolaje a Podbabských skal v Praze [Molluscs of the Šárka – Lysolaje Natural Park and Podbabské Rocks, Prague]. – *Malacologica Bohemoslovaca*, 25: 1–21. <https://doi.org/10.5817/MaB2026-25-1> (in Czech)
- Q, 2025: *Krynickillus melanocephalus*. – iNaturalist online at <https://www.inaturalist.org/observations/323440743>, published October 27, 2025.
- ROQUES A., RABITSCH W., RASPLUS J. Y., LOPEZ-VAAMONDE C., NENTWIG W. & KENIS M., 2009: Alien Terrestrial Invertebrates of Europe. In: *Handbook of Alien Species in Europe. Invading Nature – Springer Series in Invasion Ecology*, Vol 3. – Springer, Dordrecht. https://doi.org/10.1007/978-1-4020-8280-1_5
- SCHIKOV E. V., 2012: *Krynickillus melanocephalus* Kaleniczenko, 1851 (Mollusca, Gastropoda, Agriolimacidae) на Русской равнине [*Krynickillus melanocephalus* Kaleniczenko, 1851 (Mollusca, Gastropoda, Agriolimacidae) on the Russian Plain]. – *Животные: экология, биология и охрана. Материалы всероссийской научной конференции с международным участием. Саранск, Издательство Мордовского Университета [Animals: Ecology, Biology, and Conservation. Proceedings of the All-Russian Scientific Conference with International Participation. Saransk, Mordovian University Publishing House]*: 375–378. ISBN 978-5-7103-2659-6 (in Russian)
- SCHIKOV E. V., 2021: Analysis of the adventitious fauna of terrestrial molluscs in the centre of the Russian plain. – *Folia Malacologica*, 29(1): 43–50. <https://doi.org/10.12657/folmal.029.006>
- STALAŽS A., DREIJERS E., IVINSKIS P., RIMŠAITĖ J. & DŽIUGELIS M., 2017: Records of *Krynickillus melanocephalus* Kaleniczenko, 1851 (Gastropoda: Agriolimacidae) in Lithuania. – *Bulletin of the Lithuanian Entomological Society*, 1(29): 124–128.
- SVERLOVA N. V. & SON M. O., 2006: Моллюски интродуценты и их место в городских малакоценозах [Mollusks-invasaders and their place in urban malacosenoses]. In: *Фауна, экология и внутривидовая изменчивость наземных моллюсков в урбанизированной среде [Fauna, Ecology, and Intraspecific Variability of Terrestrial Mollusks in an Urbanized Environment]*, SVERLOVA N. V., KHLUS L. N., KRAMARENKO S. S., SON M. O., LEONOV S. V., VYCHALKOVSKAYA N. V., ZEMOGLYADCHUK K. V., KYRPAH S. P., KUZMOVICH M. L., STENKO R. P., FERENCZ O. G., SHKLYARUK A. N. & GURAL R. I. (eds) Государственный природоведческий музей [State Museum of Natural History], Lvov, pp. 42–59. (in Russian)
- ŠTEFFEK J., STALAŽS A. & DREIJERS E., 2008: Snail fauna of the oldest cemeteries from Riga (Latvia). – *Malacologica Bohemoslovaca*, 7: 79–80. <https://doi.org/10.5817/MaB2008-7-79>
- TURÓCI Á., FEHÉR Z., KRÍZSIK V. & PÁLL-GERGELY B., 2020: Two new alien slugs, *Krynickillus melanocephalus* Kaleniczenko, 1851 and *Tandonia kusceri* (H. Wagner, 1931), are already widespread in Hungary. – *Acta Zoologica Academiae Scientiarum Hungaricae*, 66(3): 265–282. <https://doi.org/10.17109/AZH.66.3.265.2020>
- VÁŠINA M., 2025a: *Krynickillus melanocephalus*. – iNaturalist online at <https://www.inaturalist.org/observations/319741112>, published October 9, 2025.
- VÁŠINA M., 2025b: *Krynickillus melanocephalus*. – iNaturalist online at <https://www.inaturalist.org/observations/321022034>, published October 15, 2025.
- VÁŠINA M., 2025c: *Krynickillus melanocephalus*. – iNaturalist online at <https://www.inaturalist.org/observations/322780707>, published October 24, 2025.
- VÍTEK K., 2025: *Krynickillus melanocephalus*. – iNaturalist on-

- line at <https://www.inaturalist.org/observations/322747374>, published October 24, 2025.
- VON PROSCHWITZ T., 2020: Rapid invasion of the slug *Krynickillus melanocephalus* Kaleniczenko, 1851 in Sweden and some notes on the biology and anthropochorous spread of the species in Europe (Gastropoda: Eupulmonata: Agriolimacidae). – *Folia Malacologica*, 28(3): 227–234. <https://doi.org/10.12657/folmal.028.018>
- WATZ J. & VON PROSCHWITZ T., 2023: Egg-laying habitat selection of the invasive slug *Krynickillus melanocephalus* Kaleniczenko, 1851 (Gastropoda: Eupulmonata: Agriolimacidae). – *Folia Malacologica*, 31(4): 222–228. <https://doi.org/10.12657/folmal.031.029>
- WELTER-SCHULTES F. W., 2012: European Non-marine Molluscs, a Guide for Species Identification. Planet Poster Editions, Göttingen, 674 p. + Q1-78 p.
- WIKTOR A. & JURKOWSKA J., 2007: The collection of terrestrial slugs (Gastropoda: Pulmonata) at the Museum of Natural History, Wrocław University (Poland). – *Folia Malacologica*, 15: 83–93. <https://doi.org/10.12657/folmal.015.0>
- ZEMOGLYADCHUK K. V., 2016: Новые находки слизня *Krynickillus melanocephalus* (Gastropoda, Agriolimacidae) на территории Беларуси [New records of the slug *Krynickillus melanocephalus* (Gastropoda, Agriolimacidae) in Belarus]. – *Научные стремления* [Nauchnyye stremleniya] [Scientific Aspirations], (19): 45–48. UDK 57.013:574.91/594.382 (in Russian)

Table 1. List of all Czech localities with occurrences of *Krynickyllus melanocephalus* known at the end of 2025.

	Date of coll.	Nearest municipality	Latitude (N)	Longitude (E)	Altitude (m a.s.l.)	Location and habitat	No. of specimens	leg./det.	Reference
1.	7. 10. 2024	Prague	50.1162	14.3748	201	in leaf litter under a stick	7	Říhová and Kocurková /Juríčková	ŘÍHOVÁ et al. 2026, this paper
2.	12. 10. 2024	Hradec Králové	50.1863	15.8412	235	on the path between meadow and forest	1	Kaupová/iNaturalist	KAUPOVÁ 2024
3.	21. 10. 2024	Prague	50.1172	14.3768	195	in leaf litter and in the wall between blocks	5	Říhová/Říhová	ŘÍHOVÁ et al. 2026, this paper
4.	27. 10. 2024	Prague	50.1177	14.3798	194	in leaf litter, under and near fallen wood	32	Říhová/Říhová	ŘÍHOVÁ et al. 2026, this paper
5.	9. 10. 2025	Vyškov	49.2966	17.0124	235	on the asphalt	1	Vašina/iNaturalist	VÁŠINA 2025a
6.	15. 10. 2025	Vyškov	49.2966	17.0123	235	on the concrete wall	1	Vašina/iNaturalist	VÁŠINA 2025b
7.	24. 10. 2025	Vyškov	49.2966	17.0124	235	on the concrete wall	1	Vašina/iNaturalist	VÁŠINA 2025c
8.	24. 10. 2025	Pardubice	50.0434	15.7562	210	on the sidewalk in the city	1	Vítková/iNaturalist	VÍTKOVÁ 2025
9.	24. 10. 2025	Paskov	49.7308	18.2842	280	on the street in the city	1	FB group Identification of Invertebrates	CHOVANCOVÁ 2025
10.	25. 10. 2025	Hradec Králové	50.1884	15.8438	235	leaf litter in a deciduous forest	213	Kaupová/iNaturalist	KAUPOVÁ 2025
11.	27. 10. 2025	Sázava	49.8795	14.9088	295	on the street in the city	1	Q/iNaturalist	Q 2025