



## BYTHINELLA HANSBOETERSI GLÖER ET PEŠIĆ, 2006 (GASTROPODA: RISSOOIDEA) IN BULGARIA: ITS MORPHOLOGY, MOLECULAR DISTINCTNESS, AND PHYLOGEOGRAPHY

ANDRZEJ FALNIOWSKI<sup>1</sup>, MICHAL HORSÁK<sup>2</sup>, MAGDALENA SZAROWSKA<sup>1</sup>

<sup>1</sup>Department of Malacology Institute of Zoology, Jagiellonian University, R. Ingardena 6, 30-060 Kraków, Poland (e-mail: faln@zuk.iz.uj.edu.pl)

<sup>2</sup>Department of Botany and Zoology, Masaryk University, Kotlářská 2, 611 37, Brno, Czech Republic, (e-mail: horsak@sci.muni.cz)

**ABSTRACT:** For five populations of *Bythinella* from Bulgaria the shell, penis, and female reproductive organs are figured and briefly described. 27 sequences of COI (mtDNA), and 14 of ITS-1 (rRNA) are used to infer phylogenetic relationships among the studied populations and five Central European *Bythinella* species. All five studied populations belong to the same species: *B. hansboetersi* Glöer et Pešić, 2006, which is morphologically and molecularly distinct from *B. austriaca* earlier reported from Bulgaria. NCA analysis for the COI data revealed a pattern of restricted gene flow with isolation by distance.

**KEY WORDS:** freshwater snails, *Bythinella*, Bulgaria, morphology, DNA, phylogeography

### INTRODUCTION

Data on the freshwater Risssoidea in Bulgaria are rather scarce. Among others, this concerns the genus *Bythinella* (WOHLBEREDT 1911, WAGNER 1927, JAECKEL et al. 1957, RADOMAN 1976, 1983, ANGELOV 2000, BANK 2004, GLÖER & PEŠIĆ 2006, HUBENOV 2007, SZAROWSKA et al. 2007, GEORGIEV & STOYCHEVA 2008). Much more is known on *Bythinella* in Central, South and West Europe (RADOMAN 1976, 1983, JUNGBLUTH & BOETERS 1977, GIUSTI & PEZZOLI 1977, 1980, FALNIOWSKI 1987, 1992, SZAROWSKA 1996, 2000, BOETERS 1998, FALNIOWSKI et al. 1998, 1999, BERNASCONI 2000, MAZAN 2000, MAZAN & SZAROWSKA 2000a, b, GLÖER 2002, SZAROWSKA & WILKE 2004). However, the systematic position of the genus and species discrimination within it have been somewhat less enigmatic since only recently (WILKE et al. 2001,

SZAROWSKA & WILKE 2004, SZAROWSKA 2006, BICHAIN et al. 2007), the pattern of *Bythinella* speciation still remaining unclear (FALNIOWSKI & SZAROWSKA 2009).

This study includes five populations of *Bythinella* from Bulgaria. The morphological characters of the shell, penis and female reproductive organs, which are necessary to identify the studied taxon, are presented together with molecular data (mtCOI, rITS-1). Our aim was to answer the following questions: 1. how can the species be identified?; 2. is this only one or more than one species?; 3. is the species *B. austriaca* (Frauenfeld, 1857), usually reported from Bulgaria, or another one, and if so, what are its relationships with *B. austriaca* and some other Central European *Bythinella*?; 4. what is its pattern of interpopulation differentiation like?

## MATERIAL AND METHODS

In 2005 *Bythinella* was collected at five localities in Bulgaria (Fig. 1): 1. Anton town, 1,036 m a.s.l., spring below Bolovan hill; 6.7.2005, 42°44'48.0"N, 24°16'50.7"E; 2. Anton town, 1,850 m a.s.l., spring below the top of Bolovan hill; 8.7.2005; 42°46'15.5"N, 24°16'11.4"E; 3. Smoljan town, 1,490 m a.s.l., small brook below Smoljanske Lake hotel; 1.7.2005; 41°37'01.0"N, 24°40'31.3"E; 4. Smoljan town, small brook near Amzovo; 1.7.2005; 41°33'42"N, 24°41'41"E; 5. Mugla village, 1,730 m a.s.l.; base-rich spring fen; 1.7.2005; 41°37'43.0"N, 24°31'08"E. The snails were collected by hand and with a small sieve, and fixed with 80% ethanol.

## MORPHOLOGICAL TECHNIQUES

Dissections were done using a NIKON SMZ-U stereo-microscope with a NIKON drawing apparatus, and a NIKON COOLPIX 4500 digital camera. Shells and reproductive organs were photographed with the same equipment.

## MOLECULAR TECHNIQUES

Snails were hydrated in TE buffer (3 × 10 min.) and their DNA was extracted with the SHERLOCK extracting kit (A&A Biotechnology), the final product was dissolved in 20 µl of TE buffer. The PCR reaction (PALUMBI 1996) was performed with the following primers: LCOI490 (5'-GGTCAACAAATCATAAAGA TATTGG-3') and COR722b (5'-TAAACTTCAGGGT GACCAAAAAATYA-3') for the COI gene (FOLMER et al. 1994) and two *Bythinella*-specific primers ITS1D (5'-GTGGGACGGAGTGTTGTT-3') and ITS1R (5'-CCACCGCCTAAAGTTGTTT-3') for the ITS-1 (BICHAIN et al. 2007). The PCR conditions were as follows: COI – initial denaturation step of 4 min at 94°C, followed by 35 cycles at 94°C for of 1 min, 55°C for 1 min, 72°C for 2 min, and a final extension of 4 min at 72°C; ITS-1 – initial denaturation step of 4 min at 94°C, followed by 25 cycles at 94°C for 30 s, 60°C for 30 s, 72°C for 30 s, and a final extension of 5 min at 72°C.

The total volume of each PCR reaction mixture was 50 µl. 10 µl of the PCR product was run on 1% agarose gel to check the quality of the PCR products.



Fig. 1. Localities of the studied populations of *Bythinella*; for the localities' numbers see the text

The PCR product was purified using Clean-Up columns (A&A Biotechnology). The purified PCR product was sequenced in both directions (HILLIS et al. 1996) using BigDye Terminator v3.1 (Applied Biosystems), following the manufacturer's protocol and with the primers described above. The sequencing reaction products were purified using ExTerminator Columns (A&A Biotechnology), and the sequences were read using the ABI Prism sequencer.

## DATA ANALYSIS

The COI sequences were aligned by eye, using BioEdit 5.0.0 (HALL 1999) and edited with MACCLADE 4.05 (MADDISON & MADDISON 2002). For ITS-1 an initial alignment was performed using the CLUSTALX 1.82 (THOMPSON et al. 1997). Variable fragments that could not be aligned unambiguously were then removed with MACCLADE.

Despite all the criticism concerning the maximum likelihood techniques of phylogeny reconstruction (NEI 1987, 1996, GAUT & LEWIS 1995, YANG et al. 1995, SWOFFORD et al. 1996, YANG 1997, NEI et al. 1998, NEI & KUMAR 2000, TAKAHASHI & NEI 2000, FALNIOWSKI 2003), most of it applicable to the other techniques as well, we decided to use the ML approach, as implemented in PAUP\*4.0b10 (SWOFFORD 2002), together with Modeltest (POSADA & CRANDALL 1998, POSADA 2003), to find the appropriate model of evolution, with the Akaike Information Criterion (POSADA & BUCKLEY 2004). The robustness of nodes was evaluated with bootstrap (10,000 replicates). In the phylogeny reconstruction for COI, five central European *Bythinella* species (Table 1) were used as outgroups.

Kimura's K2P distances (KIMURA 1980), as well as mean genetic diversities within and between populations were computed with the MEGA4 (TAMURA et al. 2007). Haplotype diversity  $H_d$  and nucleotide diversity  $\pi$  were computed with DNASP (ROZAS et al. 2003). To estimate gene flow between the popula-

tions,  $F_{st}$  of HUDSON et al. (1992),  $N_{st}$  of LYNCH & CREASE (1990),  $\Delta_{st}$  and  $\Gamma_{st}$  and  $G_{st}$  of NEI (1982) were calculated with DNASP.

Haplotype network was inferred for COI with the TCS 1.21 (CLEMENT et al. 2000), with the connection limit excluding homoplastic changes set to 95%. There is no reliable technique of analysis of phylogeographic data (KNOWLES & MADDISON 2002). Nested clade analysis (NCA) was intended by TEMPLETON (1998) to separate population structure from population history. The technique lacks statistical inference (KNOWLES & MADDISON 2002), not always finds the correct, realistic interpretation (e.g. PANCHAL & BEAUMONT 2007, PETIT 2007, 2008, GARRICK et al. 2008) although some of the criticism is not necessarily justified (TEMPLETON 2008). Thus the NCA approach (TEMPLETON et al. 1987, 1992, TEMPLETON & SING 1993) was inferred with the ANeCA (automation of nested clade phylogeographic analysis, PANCHAL 2007). The programme implements the construction of haplotype networks (with the TCS), the nesting of clades, the calculation of summary statistics with a test of significance applying GeoDis 2.5 (POSADA et al. 2000), and also the interpretation of results with an inference key (TEMPLETON 2004).

Table 1. GenBank Accession Numbers and references of COI sequences of species used as outgroup

Species	GenBankAN	References
<i>Bythinella austriaca</i> (Frauenfeld, 1857)	FJ545132	FALNIOWSKI et al. (in press)
<i>Bythinella compressa</i> (Frauenfeld, 1857)	AF367653	SZAROWSKA and WILKE (2004)
<i>Bythinella pannonica</i> (Frauenfeld, 1865)	AY222660	SZAROWSKA and WILKE (2004)
<i>Bythinella robicana</i> (Clessin, 1890)	AY273998	SZAROWSKA and WILKE (2004)
<i>Bythinella schmidtii</i> (Küster, 1852)	AY222649	SZAROWSKA and WILKE (2004)

## RESULTS

### MORPHOLOGY

The shells of *B. hansboetersi* (Fig. 2) were similar to the ones figured by GLÖER & PEŠIĆ (2006), although their variability was wider. The penis and flagellum (Fig. 3) also resembled the one figured by GLÖER & PEŠIĆ (2006). The female reproductive organs (Fig. 4) were typical of *Bythinella*, with a J-shaped, moderately big and bulky bursa copulatrix with a long duct usually well demarcated from the bursa, and small to moderately big receptaculum seminis (Fig. 5).

### MOLECULAR PHYLOGENY

Twenty seven sequences of COI, 546bp long (GenBank Accession numbers: GQ152518-GQ152544), and 14 of ITS-1, 303bp long (GenBank Accession numbers: GQ152545-GQ152558), were used for phylogenetic inference.

For the COI the Akaike Information Criterion (AIC) with ModelTest found model TVM+I+G, with base frequencies: A = 0.2976, C = 0.2165, G = 0.1702, T = 0.3158; substitution rate matrix: [A-C] = 6983.3535, [A-G] = 60500.1562, [A-T] = 8945.5127, [C-G] = 2052.4856, [C-T] = 60500.1562, [G-T] =

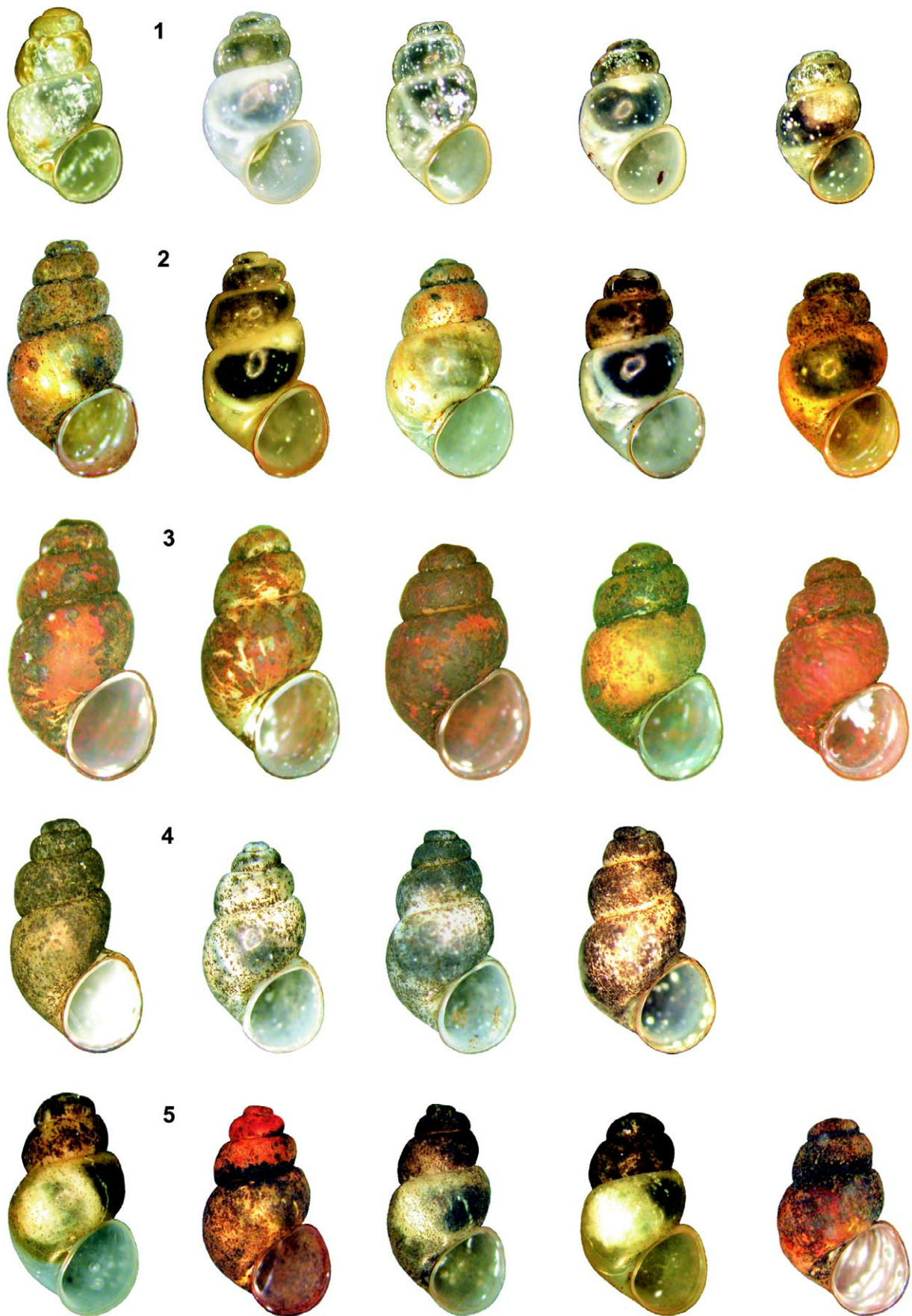


Fig. 2. Shells of *Bythinella hansboetersi*, numbers correspond to localities

1.0000, proportion of invariable sites: (I) = 0.5516, and Å distribution with the shape parameter = 0.7776.

For the ITS-1 the Akaike Information Criterion (AIC) with ModelTest found model TrNef+I, with equal base frequencies; substitution rate matrix: [A-C] = 1.0000, [A-G] = 2.8961, [A-T] = 1.0000, [C-G] = 1.0000, [C-T] = 0.8079, [G-T] = 1.0000, proportion of invariable sites: (I) = 0.8697, and equal rates for all sites.

The inferred trees (Fig. 6) show similar topologies for the two sequence fragments. Population 1 was close to 2, and 3 to 4. In ITS-1, populations 3 with 4 were

most distinct from the other populations. In COI all the populations of *B. hansboetersi* were close to each other, and formed a monophyletic group (bootstrap support 93), clearly different from e.g. *B. austriaca*.

The mean value of the K2P distance for all the COI haplotypes of *B. hansboetersi* equalled 0.008, the maximum reached 0.017. The mean value of the same distance between the other five species of *Bythinella* considered in the present analysis was 0.100, the values of the distance ranging from 0.036 (between *B. robiciana* and *B. schmidtii*) to 0.126 (between *B. compressa* and *B. schmidtii*).

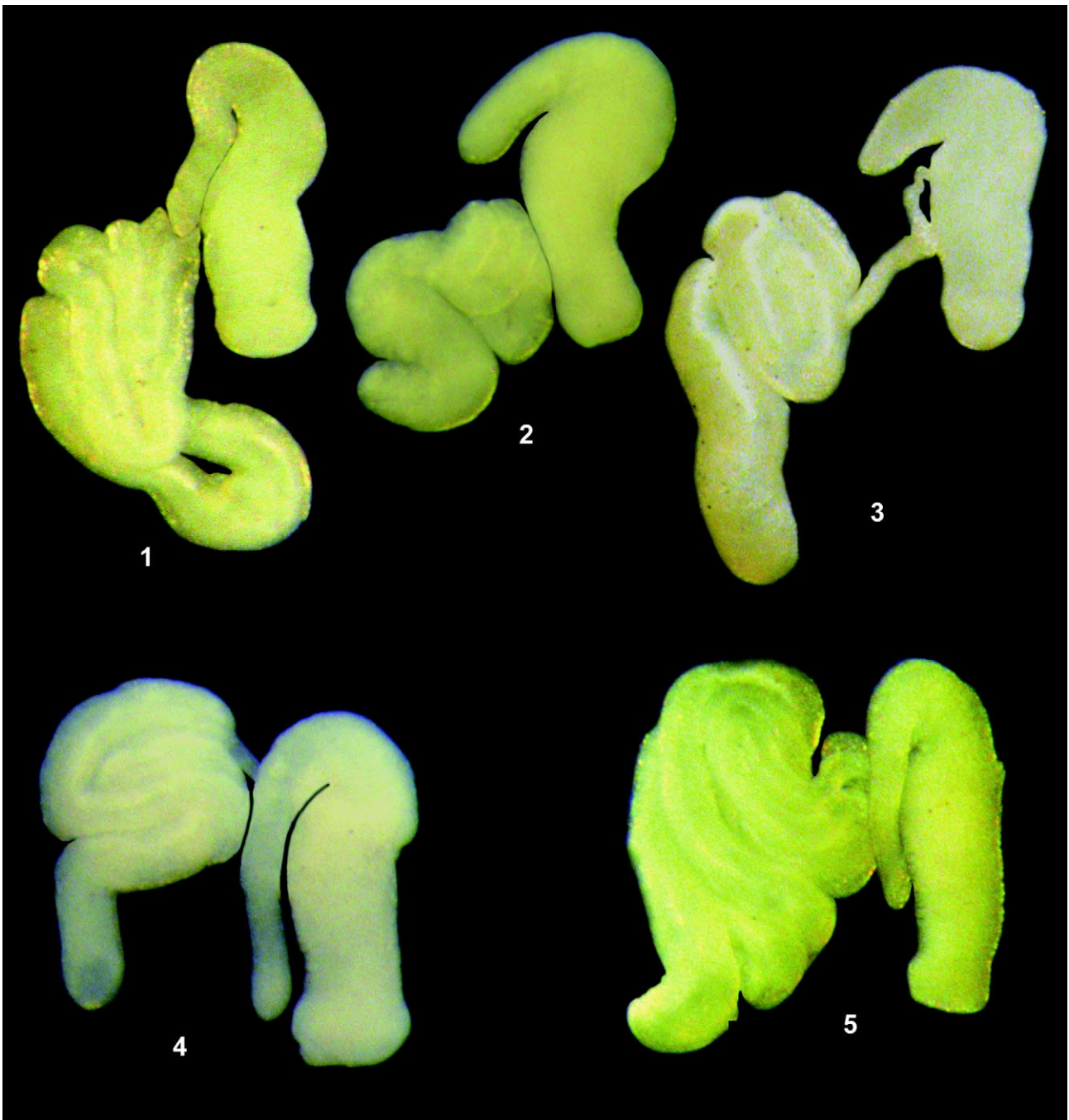


Fig. 3. Penes of *Bythinella hansboetersi*, numbers correspond to localities

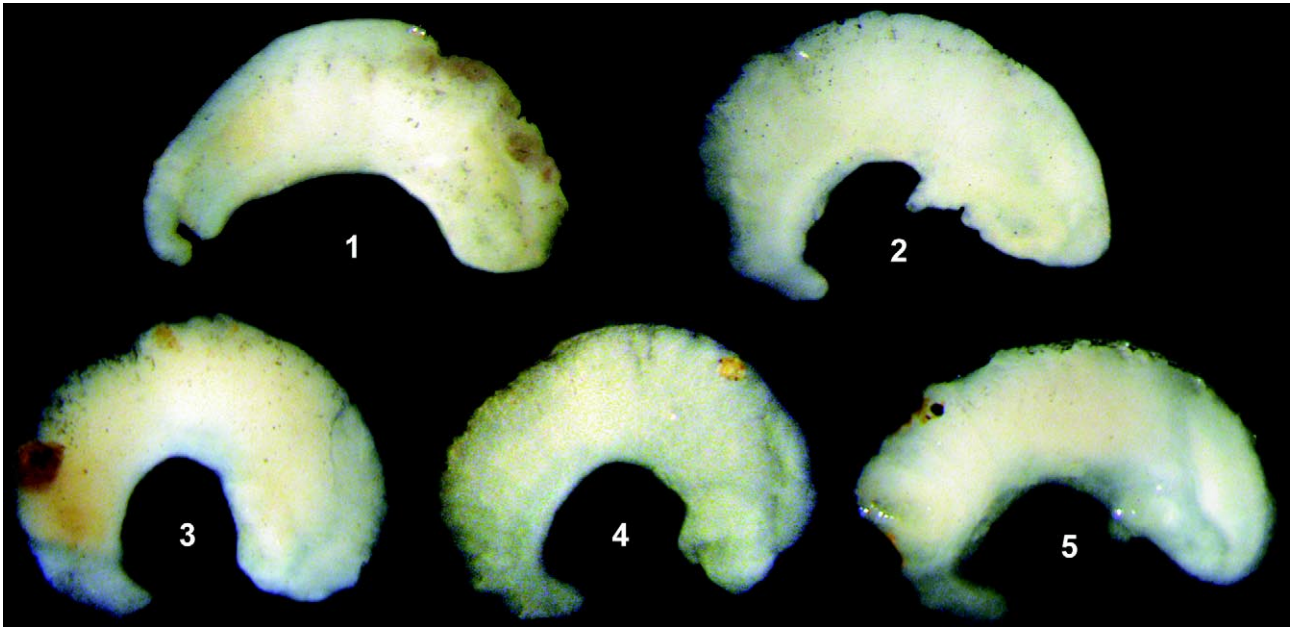


Fig. 4. Pallial section of the female reproductive organs of *Bythinella hansboetersi*, numbers correspond to localities

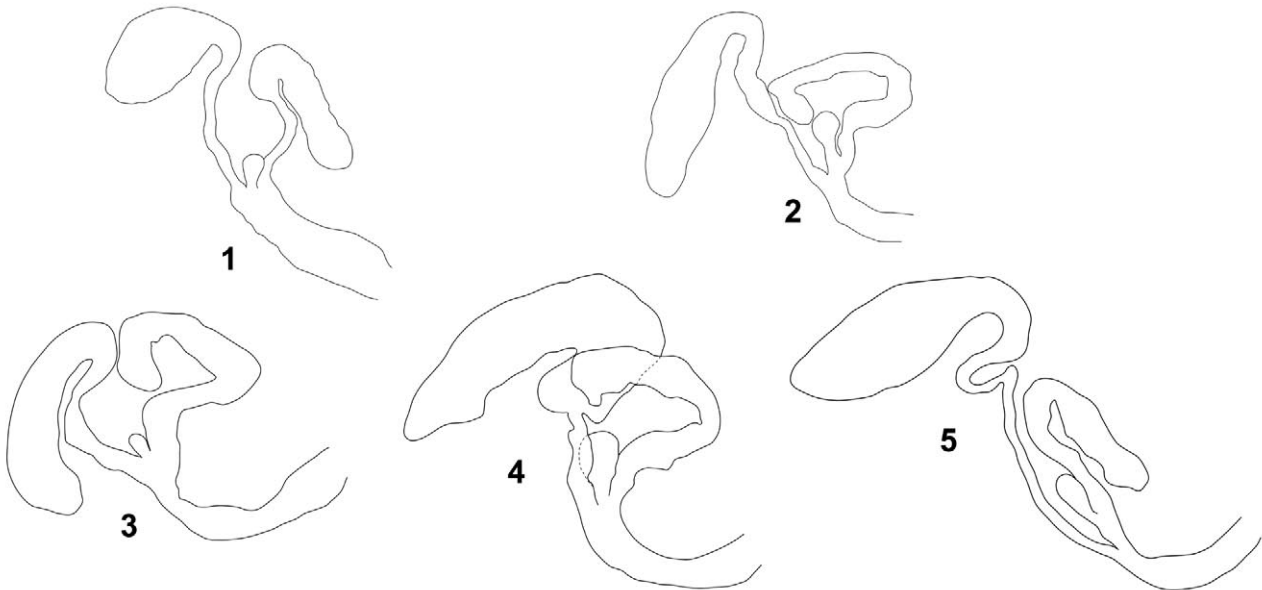


Fig. 5. Bursa copulatrix with duct, receptaculum seminis and loop of (renal) oviduct of *Bythinella hansboetersi*, numbers correspond to localities

For COI, within *B. hansboetersi* the mean genetic diversity for all the metapopulation was 0.008, mean within populations: 0.002, and mean between the (sub)populations was 0.006. 16 haplotypes were found, differing in 13 sites. Haplotype diversity  $H_d = 0.954 \pm 0.021$ , nucleotide diversity  $\pi = 0.00783 \pm 0.00071$ . Within the populations, haplotype diversity  $H_d$  was  $0.50000 \pm 0.265$  for population 1,  $0.83333 \pm 0.222$  for 2,  $0.90000 \pm 0.161$  for 3,  $0.80952 \pm 0.130$  for 4, and  $0.66667 \pm 0.160$  for population 5. Nucleotide diversity  $\pi$  was  $0.00092 \pm 0.00049$  in population 1,  $0.00214 \pm 0.00067$  in 2,  $0.00366 \pm 0.00108$

in 3,  $0.00227 \pm 0.00060$  in 4, and  $0.00209 \pm 0.00080$  in population 5. Gene flow estimates calculated for COI with DNASP were low (0.09-1.39, according to the technique applied). For all the tests of genetic differentiation between the studied populations the permutation test with 5,000 replicates indicated high significance ( $P < 0.001$ ).

The haplotype network (Fig. 7) generally mirrored the pattern shown by the ML tree for COI (Fig. 6). Restricted gene flow with isolation by distance was found for the total cladogram by the inference key.

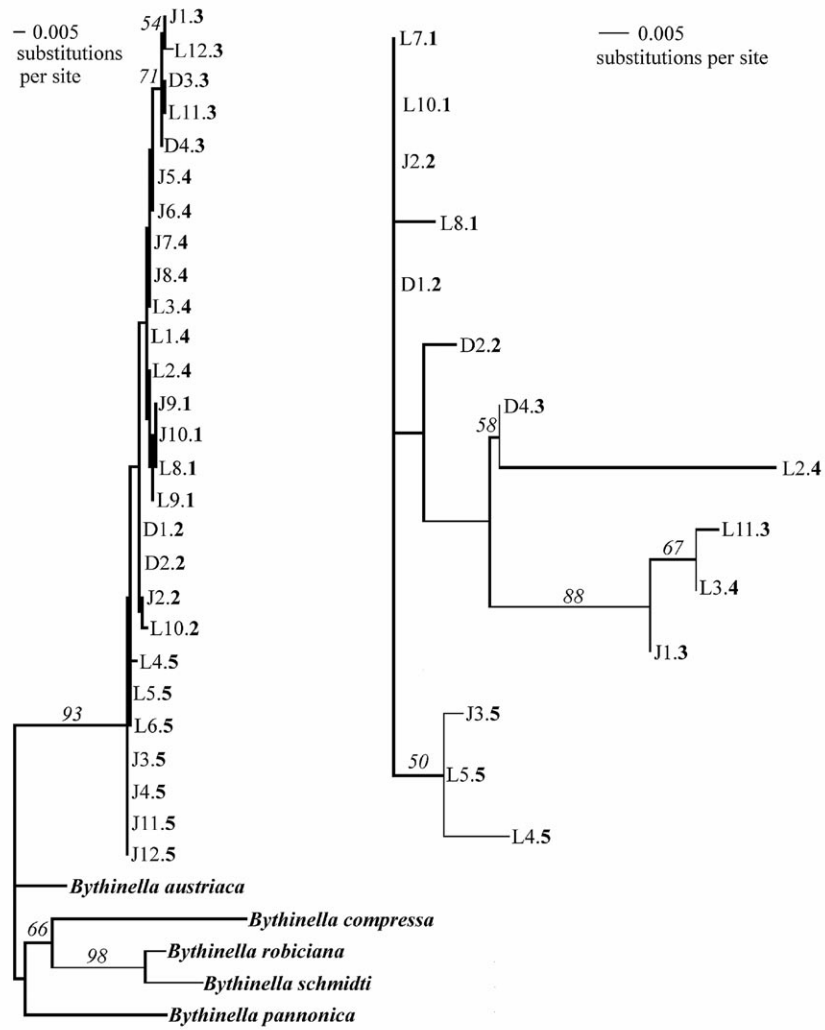


Fig. 6. Maximum-likelihood trees for the COI (left) and ITS-1 (right). Localities' numbers in bold. Bootstrap support indicated (10,000 replicates) when > 50%. See text for details

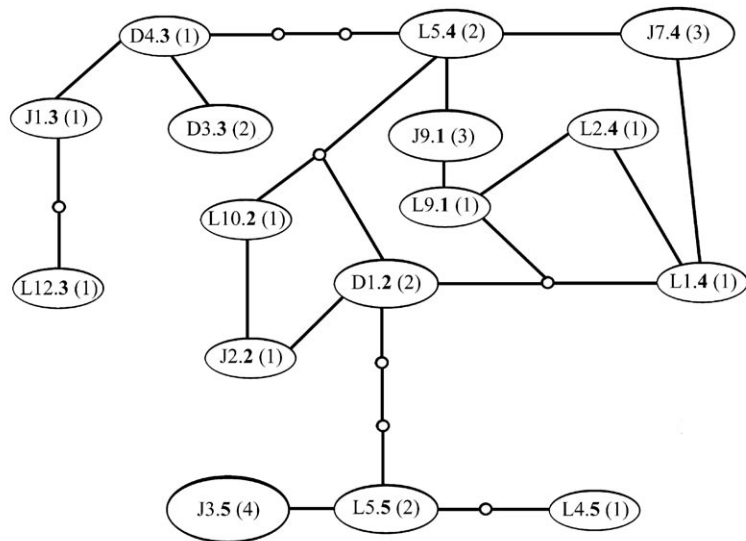


Fig. 7. Haplotype network for the COI, localities' numbers in bold, ellipse size proportional to the number of specimens representing a haplotype (given in brackets)

## DISCUSSION

The morphology, as well as geographic distribution of the studied populations of *Bythinella* confirm their identity with *Bythinella hansboetersi*, described recently by GLÖER & PEŠIĆ (2006) from this part of Bulgaria.

All the studied populations are conspecific. This species is certainly molecularly not identical with *B. austriaca* usually reported from Bulgaria (ANGELOV 2000, BANK 2004, HUBENOV 2007). It is quite distinct from all the Central European *Bythinella* species considered, showing a level of distinctness typical of interspecific level within the Rissooidea (e.g. FALNIOWSKI et al. 2007, SZAROWSKA et al. 2007).

Any existing technique of estimating gene flow between (sub)populations is reliable in any conditions (for a review see AVISE 2000, FALNIOWSKI et al. 1999, 2004). However, the so-called direct techniques (based on direct observations of migration of individuals) cannot be used instead, since they do not provide information about the fate of the genes of immigrants (e.g. FALNIOWSKI et al. 1999, 2004). In the Bulgarian *Bythinella*, the level of gene flow was low, which was also confirmed by the inference key (TEMPLETON 2004).

The number of studied populations (5) is certainly too low for any more sound conclusion, but no more

material was available. In fact, two of them were situated very close to each other, and the other three were very close to each other also. On the other hand, the geographic distance between the two groups of populations approached 135 km. The inference key (TEMPLETON 2004) found the observed interpopulation differentiation to be due to isolation by distance with restricted gene flow. In the case of such isolated habitats like springs one should rather predict the infinite island pattern, not the isolation by distance one (or, considering the low level of gene flow, the stepping stone model), but the pattern discovered in the present study is the same as that found in the Polish *Bythinella* in our earlier study based on allozymes (FALNIOWSKI et al. 1998).

## ACKNOWLEDGEMENTS

The study was supported by a grant from the Polish Ministry of Science and Higher Education (PB 2443/P01/2006/31) to ANDRZEJ FALNIOWSKI, and by a grant from the Czech Ministry of Education (MSM 0021622416) to MICHAL HORSÁK. We are very grateful to PETER GLÖER for his help with the literature on the Bulgarian malacofauna.

## REFERENCES

- ANGELOV A. M. 2000. Mollusca (Gastropoda et Bivalvia) aquae dulcis. Catalogus Faunae Bulgaricae 4, Pensoft & Backhuys Publishers, Sofia–Leiden.
- AVISE J. C. 2000. Phylogeography. The history and formation of species. Harvard University Press, Cambridge, MA and London.
- BANK R. A. 2004. Fauna Europaea: Mollusca, Gastropoda. Fauna Europaea version 1.1, <http://www.faunaeur.org>.
- BERNASCONI R. 2000. Révision du Genre *Bythinella* (Moquin-Tandon, 1855) (Gastropoda Prosobranchia Hydrobiidae: Amnicolinae Bythinellini) de la France du Centre-Ouest, du Midi et des Pyrénées. Doc. Malacol. 1: 1–126.
- BICHAIN J.-M., GAUBERT P., SAMADI S., BOISSELIER-DUBAYLE M.-C. 2007. A gleam in the dark: Phylogenetic species delimitation in the confusing spring-snail genus *Bythinella* Moquin-Tandon, 1856 (Gastropoda: Rissooidea: Amnicolidae). Mol. Phyl. Evol. 45: 927–941.
- BOETERS H. D. 1998. Mollusca: Gastropoda: Superfamilie Rissooidea). In: SCHWOERBEL J., ZWICK P. (eds) Süßwasserfauna von Mitteleuropa. Begründet von A. Brauer, 5/1–2, Gustav Fischer Verlag, Jena–Lübeck–Ulm.
- CLEMENT M., POSADA D., CRANDALL K. A. 2000. TCS: a computer program to estimate gene genealogies. Mol. Ecol. 9: 1657–1660.
- FALNIOWSKI A. 1987. Hydrobioidea of Poland (Prosobranchia: Gastropoda). Fol. Malacol. 1: 1–122.
- FALNIOWSKI A. 1992. Genus *Bythinella* Moquin-Tandon, 1855, in Poland (Gastropoda, Prosobranchia, Hydrobiidae). In: GITTENBERGER E., GOUD J., (eds). Proceedings of the Ninth International Malacological Congress, Edinburgh, 31 August–6 September 1986. Unitas Malacologica and National Museum of Natural History, Leiden, pp. 135–138.
- FALNIOWSKI A. 2003. Metody numeryczne w taksonomii. Wydawnictwo Uniwersytetu Jagiellońskiego, Kraków.
- FALNIOWSKI A., MAZAN K., SZAROWSKA M. 1999. Homozygote excess and gene flow in the spring snail *Bythinella* (Gastropoda: Prosobranchia). J. Zool. Syst. Evol. Res. 37: 165–175.
- FALNIOWSKI A., SZAROWSKA M. 2009. Letter to the Editor: Comments to the paper of Bichain et al. (2007) A gleam in the dark: Phylogenetic species delimitation in the confusing spring-snail genus *Bythinella* Moquin-Tandon, 1856 (Gastropoda: Rissooidea: Amnicolidae), published in Molecular Phylogenetics and Evolution 45 (3): 927–941 (2007). Mol. Phyl. Evol. 50: 405–406.
- FALNIOWSKI A., SZAROWSKA M., FIAŁKOWSKI W., MAZAN K. 1998. Unusual geographic pattern of interpopulation variation in a spring snail *Bythinella* (Gastropoda, Prosobranchia). J. Nat. Hist. 32: 605–616.
- FALNIOWSKI A., SZAROWSKA M., GRZMIL P. 2007. *Daphniola* Radoman, 1973 (Gastropoda: Hydrobiidae): shell bio-





- metry, mtDNA, and the Pliocene flooding. *J. Nat. Hist.* 41: 2301–2311.
- FALNIOWSKI A., SZAROWSKA M., WITKOWSKA-PELC E. 2004. Intra- and interpopulation genetic differentiation and gene flow in a group of isolated populations of *Bradybaena fruticum* (O. F. Müller, 1774) in South Poland. *J. Zool. Syst. Evol. Res.* 42: 70–80.
- FALNIOWSKI A., SZAROWSKA M., SIRBU I. 2009. *Bythinella* Moquin-Tandon, 1856 (Gastropoda: Rissooidea: Bythinellidae) in Romania: its morphology, with description of four new species. *Folia Malacol.* 17: 21–36.
- FOLMER O., BLACK M., HOEH W., LUTZ R. A., VRIJENHOEK R. C. 1994. DNA primers for amplification of mitochondrial cytochrome c oxidase subunit I from diverse metazoan invertebrates. *Mol. Mar. Biol. Biotechnol.* 3: 294–299.
- GARRICK R. C., DYER R. J., BEHEREGARAY L. B., SUNNUCKS P. 2008. Babies and bathwater: a comment on the premature obituary for nested clade phylogeographical analysis. *Mol. Ecol.* 17: 1401–1403.
- GAUT B. S., LEWIS P. O. 1995. Success of maximum likelihood phylogeny inference in the four-taxon case. *Mol. Biol. Evol.* 12: 152–162.
- GEORGIEV D., STOYCHEVA S. 2008. A record of *Bythinella* cf. *opaca* (Gallenstein, 1848) (Gastropoda: Prosobranchia: Hydrobiidae) in Bulgaria. *Malacol. Bohemoslov.* 7: 51–54.
- GIUSTI F., PEZZOLI E. 1977. Primo contributo alla revisione del genere *Bythinella* in Italia. *Natura Bresciana. Ann. Mus. Civ. St. Nat. Brescia* 14: 3–80.
- GIUSTI F., PEZZOLI E. 1980. *Gasteropodi*, 2 (Gastropoda: Prosobranchia; Hydrobioidea, Pyrguloidea). Consiglio Nazionale delle Ricerche AQ/1/47. Guide per il riconoscimento delle specie animali delle acque interne Italiane, 8, Verona.
- GLÖER P. 2002. Die Süßwassergastropoden Nord- und Mitteleuropas, Bestimmungsschlüssel, Lebensweise, Verbreitung. 2. neuarbeitete Auflage. In: *Die Tierwelt Deutschlands*, 73, ConchBooks, Hackenheim.
- GLÖER P., PEŠIĆ V. 2006. *Bythinella hansboetersi* n. sp., a new species from Bulgaria. *Heldia* 6: 11–15.
- HALL T. A. 1999. BioEdit: a user-friendly biological sequence alignment editor and analysis program for Windows 95/98/NT. *Nucleic Acids Symp. Ser.* 41: 95–98.
- HILLIS D. M., MABLE B. K., LARSON A., DAVIS S. K., ZIMMER E. A. 1996. *Nucleic Acids IV: Sequencing and Cloning*. In: HILLIS D. M., MORITZ C., MABLE B. K. (eds). *Molecular Systematics*. Second edition. Sinauer Associates, Inc., Sunderland, Massachusetts, pp. 321–381.
- HUBENOV Z. 2007. Fauna and Zoogeography of Marine, Freshwater, and Terrestrial Mollusks (Mollusca) in Bulgaria. In: FET V., POPOVA A., (eds). *Biogeography and Ecology of Bulgaria*. Springer Verlag, Dordrecht, pp. 141–198.
- HUDSON R. R., SLATKIN M., MADDISON W. P. 1992. Estimation of levels of gene flow from DNA sequence data. *Genetics* 132: 583–589.
- JAECKEL S. G., KLEMM W., MEISE W. 1957. Die Land- und Süßwasser-Mollusken der nördlichen Balkanhalbinsel. *Abh. Berich. Staatl. Mus. Tierk. Forsch. Dresden* 23: 141–205.
- JUNGBLUTH J. H., BOETERS H. D. 1977. Zur Artabgrenzung bei *Bythinella dunkeri* und *bavarica* (Prosobranchia). *Malacologia* 16: 143–147.
- KIMURA M. 1980. A simple method for estimating evolutionary rate of base substitutions through comparative studies of nucleotide sequences. *J. Mol. Evol.* 16: 111–120.
- KNOWLES L. L., MADDISON W. P. 2002. Statistical phylogeography. *Mol. Ecol.* 11: 2623–2635.
- LYNCH M., CREASE T. J. 1990. The analysis of population survey data on DNA sequence variation. *Mol. Biol. Evol.* 7: 377–394.
- MADDISON D. R., MADDISON W. P. 2002. *MACCLADE 4.05*. Sinauer Associates, Inc. Publishers, Sunderland, Massachusetts, USA.
- MAZAN K. 2000. Morphological and allozymic variation within and between populations of *Bythinella* Moquin-Tandon, 1855 (Gastropoda: Prosobranchia), I. Morphological characters. *Folia Malacol.* 8: 107–139.
- MAZAN K., SZAROWSKA M. 2000a. Morphological and allozymic variation within and between populations of *Bythinella* Moquin-Tandon, 1855 (Gastropoda: Prosobranchia), II. Phenetic analysis. *Folia Malacol.* 8: 189–213.
- MAZAN K., SZAROWSKA M. 2000b. Morphological and allozymic variation within and between populations of *Bythinella* Moquin-Tandon, 1855 (Gastropoda: Prosobranchia), III. Phylogenetic analysis. *Folia Malacol.* 8: 257–269.
- NEI M. 1982. Evolution of human races at the gene level. In: BONNE-TAMIR B., COHEN T., GOODMAN R. M. (eds.). *Human genetics, part A: The unfolding genome*. Alan R. Liss, New York, pp. 167–181.
- NEI M. 1987. *Molecular evolutionary genetics*. Columbia University Press, New York.
- NEI M. 1996. Phylogenetic analysis in molecular evolutionary genetics. *Ann. Rev. Gen.* 30: 371–403.
- NEI M., KUMAR S. 2000. *Molecular evolution and phylogenetics*. Oxford University Press, Oxford, New York.
- NEI M., KUMAR S., TAKAHASHI K. 1998. The optimization principle in phylogenetic analysis tends to give incorrect topologies when the number of nucleotides or amino acids used is small. *Proc. Nat. Acad. Sci. U.S.A.* 76: 5269–5273.
- PALUMBI S. R. 1996. *Nucleic Acids II: The Polymerase Chain Reaction*. In: HILLIS D. M., MORITZ C., MABLE B. K. (eds). *Molecular Systematics*. Second Edition. Sinauer Associates, Inc., Sunderland, Massachusetts, pp. 205–247.
- PANCHAL M. 2007. The automation of nested clade phylogeographic analysis. *Bioinformatics* 23: 509–510.
- PANCHAL M., BEAUMONT M. A. 2007. The automation and evaluation of nested clade phylogeographic analysis. *Evolution* 61: 1466–1480.
- PETIT R. J. 2007. The coup de grace for the nested clade phylogeographic analysis? *Mol. Ecol.* 17: 516–518.
- PETIT R. J. 2008. On the falsifiability of the nested clade phylogeographic analysis method. *Mol. Ecol.* 17: 1404–1404.
- POSADA D. 2003. Selecting models of evolution. In: SALEMI M., VANDAMME A.-M. (eds). *The phylogenetic handbook*.

- A practical approach to DNA and protein phylogeny. Cambridge University Press, Cambridge, pp. 256–282.
- POSADA D., BUCKLEY T. R. 2004. Model Selection and Model Averaging in Phylogenetics: Advantages of Akaike Information Criterion and Bayesian Approaches Over Likelihood Ratio Tests. *Syst. Biol.* 53: 793–808.
- POSADA D., CRANDALL K. A. 1998. Modeltest: testing the model of DNA substitution. *Bioinformatics* 14: 817–818.
- POSADA D., CRANDALL K. A., TEMPLETON A. R. 2000. GeoDis: a program for the cladistic nested analysis of the geographical distribution of genetic haplotypes. *Mol. Ecol.* 9: 487–488.
- RADOMAN P. 1976. Speciation within the family Bythinellidae on the Balkans and Asia Minor. *Zeitschr. zool. Syst. Evolutionsforsch.* 14: 130–152.
- RADOMAN P. 1983. Hydrobioidea a superfamily of Prosobranchia (Gastropoda). I. Systematics. Monographs Serbian Academy of Sciences and Arts, DXLVII, Department Sciences 57: 1–256.
- ROZAS J., SÁNCHEZ-DEL BARRIO J. C., MESSEGUER X., ROZAS R. 2003. DnaSP, DNA polymorphism analyses by the coalescent and other methods. *Bioinformatics* 19: 2496–2497.
- SWOFFORD D. L. 2002. PAUP\*. Phylogenetic analysis using parsimony (\* and other methods). Version 4. Sinauer Associates, Inc., Sunderland, Massachusetts.
- SWOFFORD D. L., OLSEN G. J., WADDELL P. J., HILLIS D. M. 1996. Phylogenetic Inference. In: HILLIS D. M., MORITZ C., MABLE B. K. (eds). *Molecular Systematics*. Second Edition. Sinauer Associates, Inc., Sunderland, Massachusetts, pp. 407–514.
- SZAROWSKA M. 1996. The egg capsules of *Bythinella austriaca* (Frauenfeld, 1856) with observations on the veliger and embryonic shell. *J. Moll. Stud.* 62: 546–549.
- SZAROWSKA M. 2000. Environmental stress and stability of *Bythinella* populations in South Poland (Gastropoda: Prosobranchia: Hydrobioidea). *Malak. Abh.* 20: 93–98.
- SZAROWSKA M. 2006. Molecular phylogeny, systematics and morphological character evolution in the Balkan Rissooidea (Caenogastropoda). *Folia Malacol.* 14: 99–168.
- SZAROWSKA M., GRZMIL P., FALNIOWSKI A., SIRBU I. 2007. *Grossuana codreamii* (Grossu, 1946) and the phylogenetic relationships of the East Balkan genus *Grossuana* (Radoman, 1973) (Gastropoda: Rissooidea). *Hydrobiologia* 579: 379–391.
- SZAROWSKA M., WILKE T. 2004. *Sadleriana pannonica* (Frauenfeld, 1865): a lithoglyphid, hydrobiid or amnicolid taxon? *J. Moll. Stud.* 70: 49–57.
- TAKAHASHI K., NEI M. 2000. Efficiencies of fast algorithms of phylogenetic inference under the criteria of maximum parsimony, minimum evolution and maximum likelihood when a large number of sequences are used. *Mol. Biol. Evol.* 17: 1251–1258.
- TAMURA K., DUDLEY J., NEI M., KUMAR S. 2007. MEGA4: Molecular Evolutionary Genetics Analysis (MEGA) software version 4.0. *Mol. Biol. Evol.* 24: 1596–1599.
- TEMPLETON A. R. 1998. Nested clade analyses of phylogeographic data: testing hypotheses about gene flow and population history. *Mol. Ecol.* 7: 381–397.
- TEMPLETON A. R. 2004. Statistical phylogeography: methods of evaluating and minimizing inference errors. *Mol. Ecol.* 13: 789–809.
- TEMPLETON A. R. 2008. Nested clade analysis: an extensively validated method for strong phylogeographic inference. *Mol. Ecol.* 17: 1877–1880.
- TEMPLETON A. R., BOERWINKLE E., SING C. F. 1987. A cladistic analysis of phenotypic associations with haplotypes inferred from restriction endonuclease mapping. I. basic theory and an analysis of alcohol dehydrogenase activity in *Drosophila*. *Genetics* 117: 343–351.
- TEMPLETON A. R., CRANDALL K. A., SING C. F. 1992. A cladistic analysis of phenotypic associations with haplotypes inferred from restriction endonuclease mapping and DNA sequence data III. Cladogram estimation. *Genetics* 132: 619–633.
- TEMPLETON A. R., SING C. F. 1993. A cladistic analysis of phenotypic associations with haplotypes inferred from restriction endonuclease mapping. 4. nested analyses with cladogram uncertainty and recombination. *Genetics* 134: 659–669.
- THOMPSON J. D., GIBSON T. J., PLEWNIAK F., JEANMOUGIN F., HIGGINS D. G. 1997. The ClustalX windows interface: flexible strategies for multiple sequence alignment aided by quality analysis tools. *Nucleic Acids Res.* 24: 4876–4882.
- WAGNER A. 1927. Studien zur Molluskenfauna der Balkanhalbinsel mit besonderer Berücksichtigung Bulgariens und Thraziens, nebst monographischer Bearbeitung einzelner Gruppen. *Ann. Zool. Mus. Polon. Hist. Nat.* 6: 263–399.
- WILKE T., DAVIS G. M., FALNIOWSKI A., GIUSTI F., BODON M., SZAROWSKA M. 2001. Molecular systematics of Hydrobiidae (Gastropoda: Rissooidea): testing monophyly and phylogenetic relationships. *Proc. Acad. Nat. Sci. Philad.* 151: 1–21.
- WOHLBEREDT O. 1911. Zur Molluskenfauna von Bulgarien. *Abh. Naturforsch. Ges. Görlitz* 27: 167–234.
- YANG Z. 1997. How often do wrong models produce better phylogenies? *Mol. Biol. Evol.* 14: 105–108.
- YANG Z., GOLDMAN N., FRIDAY A. 1995. Maximum likelihood trees from DNA sequences: A peculiar statistical estimation problem. *Syst. Biol.* 44: 384–399.

Received: April 25th, 2009

Accepted: May 20th, 2009

